

# HomeWizard P1

Quick installation guide

# HomeWizard P1

- **The HomeWizard P1 Meter** is a small device that connects to your home's utility energy meter (if it has a P1 port) and sends live data about your electricity use
- When plugged into the P1 port of your energy meter, the P1 Meter displays your real-time power usage, including the amount of electricity your home is consuming and the amount of solar power you're generating (if you have solar panels). It then sends that information over Wi-Fi directly to your EV charger.



# HomeWizard app

- 1) Download HomeWizard application on your phone & create an account
- 2) Install the P1 Meter in the P1 port on your utility meter



more information:

<https://helpdesk.homewizard.com/en/articles/5936058-how-to-install-the-p1-meter>

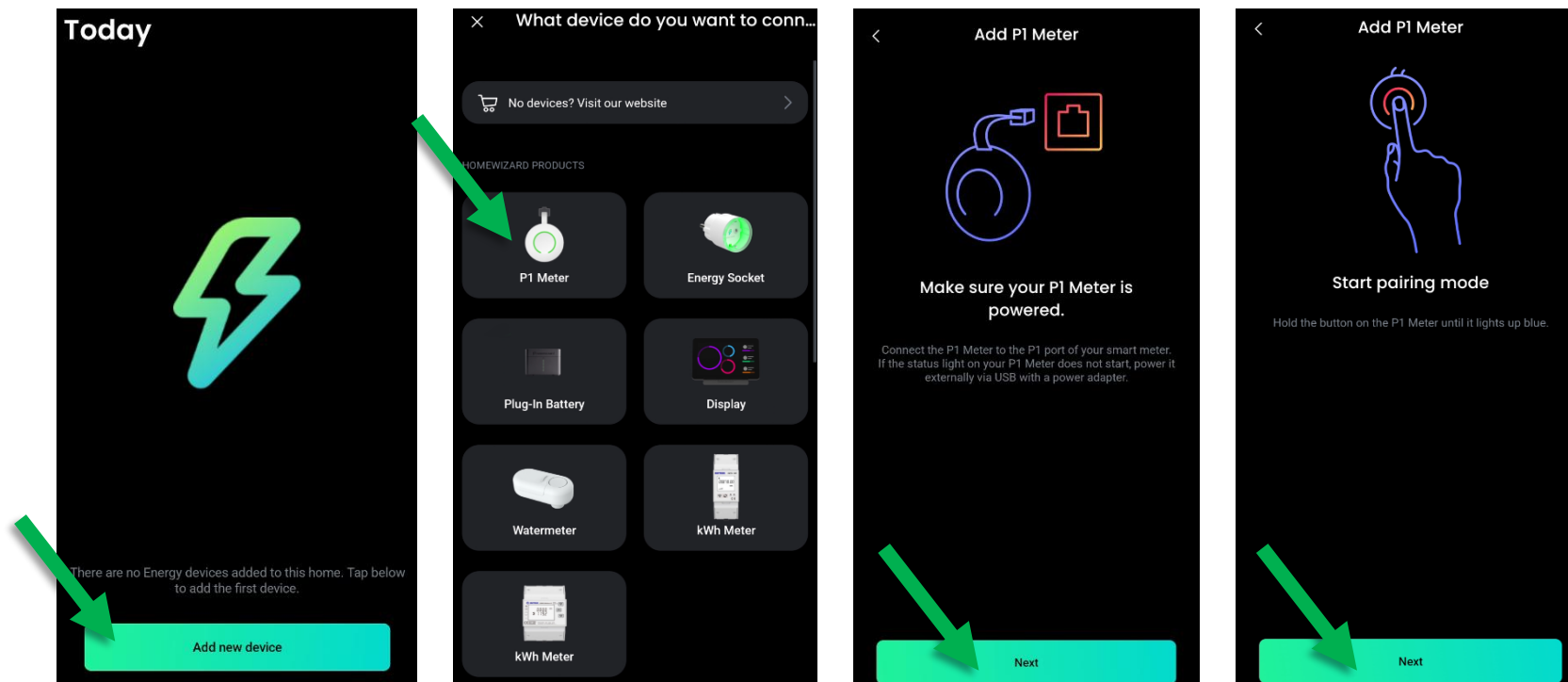
# HomeWizard app

- 3) Make sure your P1 Meter is powered. (It should light up in green)
- 4) Start Pairing mode by holding the button for few seconds until P1 will change LED color to blue



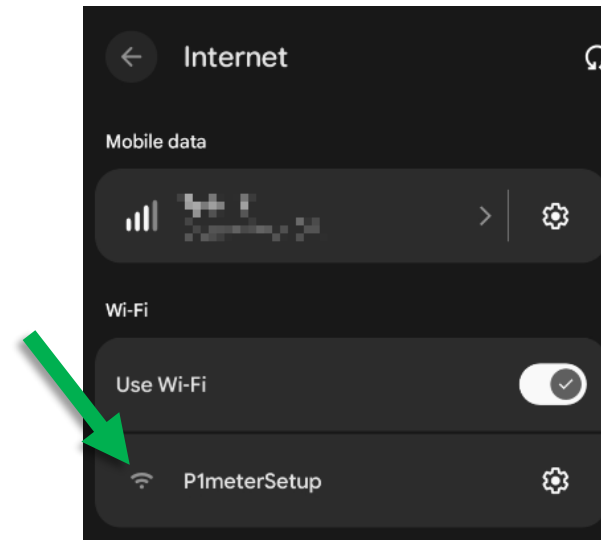
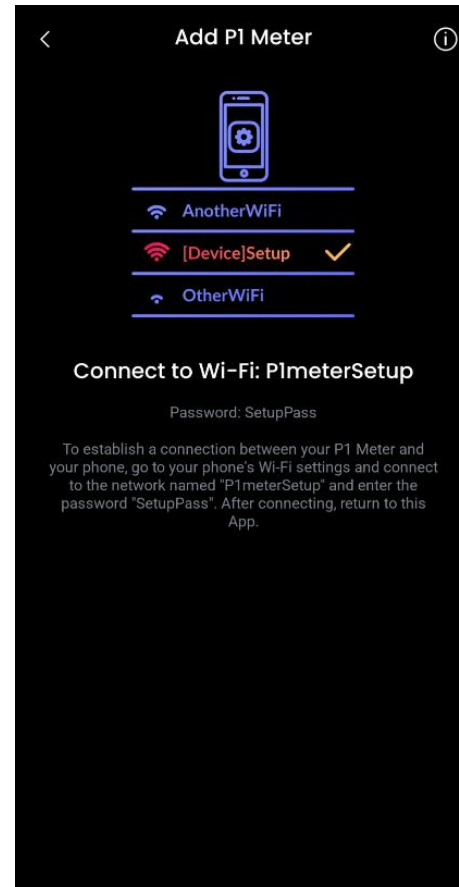
# HomeWizard app

5) Open the application and follow the instructions



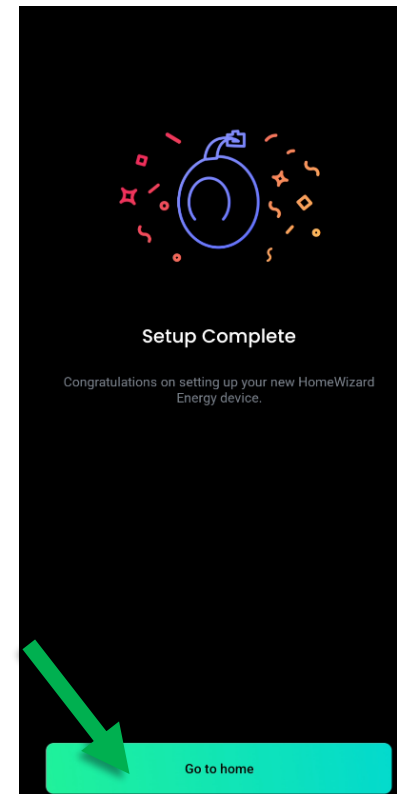
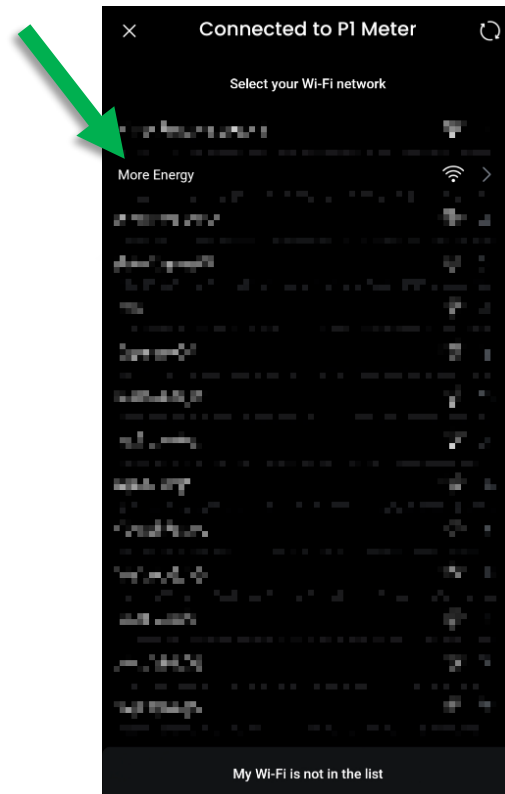
# HomeWizard app

6) To pair with HomeWizard you must connect to its WiFi access with your phone



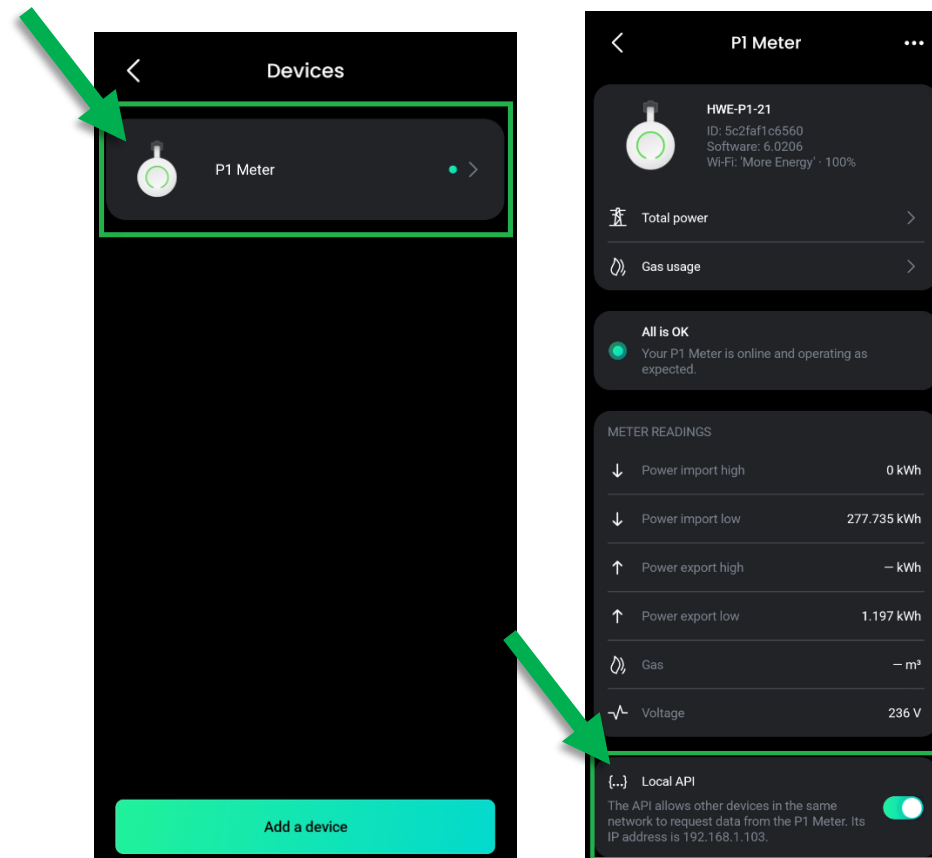
# HomeWizard app

7) After that, go back to the app and connect the P1 meter to your network (this menu should pop up automatically). Input password and complete the setup



# HomeWizard app

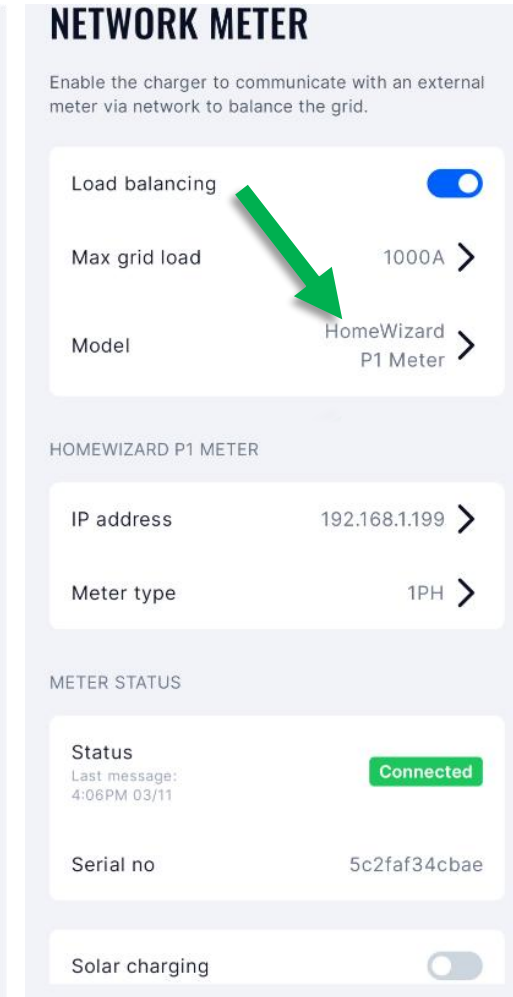
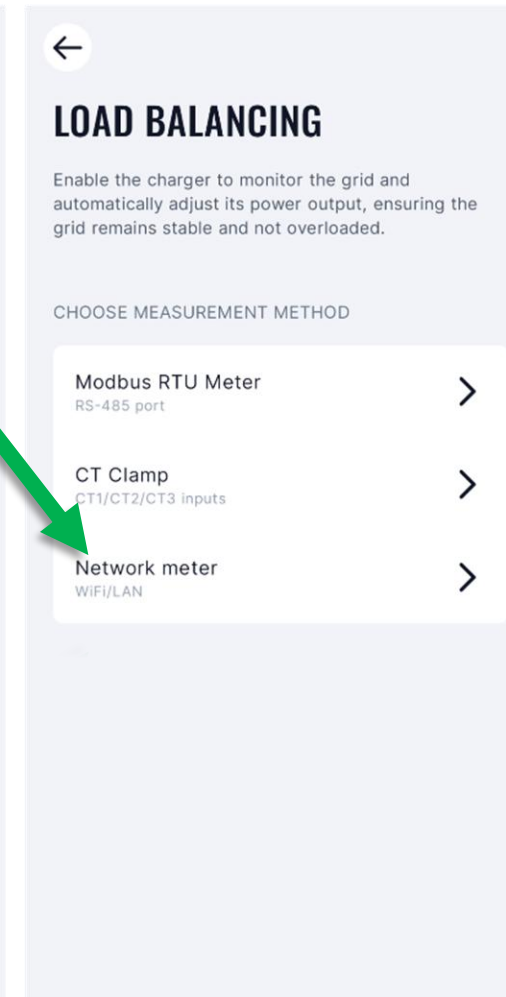
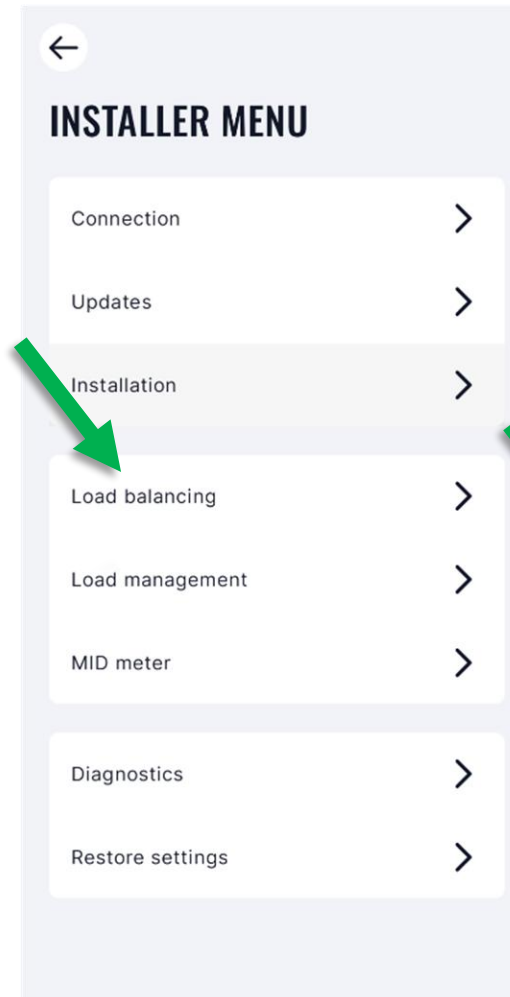
8) After setup is complete, navigate to your devices and enter meters settings. In here you will see the IP address of the meter. Write it down as charger will need to connect to it



# Energy app

9) Navigate to Load balancing section in our app

10) Enable load balancing and select HomeWizard P1 as your model



# Energy app

11) Write down the IP address from HomeWizard app and see if status changed to connected

12) Upon successful connection adjust max grid load according to your own grid.

