

Android/iOS v1.10.0
FW v1.10

To get the latest features and bug fixes, please update your charger's [firmware](#) and Android/iOS app to latest version (v1.10.0)

New features

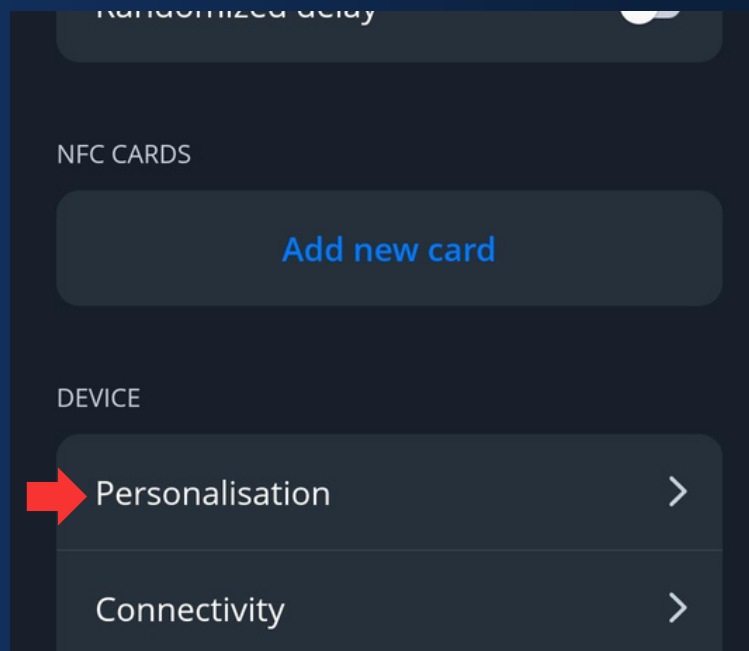
- Additional meter support

From now on we have expanded list of supported energy meters:

- Supports DLB and Solar:
 - Chint DTSU666 / DDSU666
 - Acrel DTSD1352
- Supports DLB (can not be used in Solar instalations):
 - Entes ES-45LS.

- Personalization settings update

Clients will be able to choose what kind of measurement is used to represent power consumption. It will be possible to choose between A and kW. Setting is called “Display units”.



New features

- Diagnostics window update

From now on there are two new sections in Diagnostics window called “*Live data from energy meter*” and “*Live data from CT*”. They appear after DLB is activated in Installer menu.

In section “*Live data from energy meter*”, charging station will be able to provide information such as:

- Voltage
- Grid load
- Solar surplus

These values are measured by energy meter on one and three phase setup.

In section “*Live data from CT*” charging station will be able to provide information about measured amperage on DLB CT.

- Dynamic Load Management for EVC16X HW

From now on, EVC16X firmware supports Dynamic Load management. This functionality can be achieved using such calculation methods:

- Static - Without any meter. Charging stations are connected in separate grid without additional load.
- Energy meter - external meter connected to take into consideration house or office load.
- CT clamps - clamped on the mains cable in order to adjust usage to meet remaining power from the house/office

- Possibility to delete paired chargers

From now on, application will provide a possibility to remove unused charging stations from main selection window.



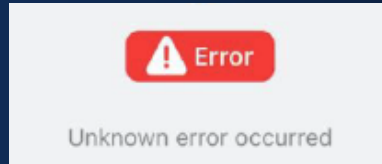
Note:

In order to remove unused station, simply press on "x" symbol at the corner

New features

- Interactive warning icon in the application

From now on user will be able to press on the red “warning“ label in application charging window. It will automatically redirect user to “Active errors & warnings“ section for simpler navigation.



- Automated closing of the application (Android only)

From now on, if Android application would be left unused for 30 sec or more, it will close by itself to relief device from memory strain and optimize usage.

- Additional modem statuses

Added new mobile statuses in connectivity section:

- "Disconnecting"
- "Turning on"
- "Turning off"

OCPP

- Randomized delay using OCPP

Added new custom configuration element called “RandomisedDelay“. Function allows for delay before charging session.

- Default value for EVC16 is 600 s.
- Other versions will have default value 0 s.
- Valid value range 0-1800 s.

- Additional mode in OCPP - “PlugAndChargeNoAuth”

From now on it will be possible to enable plug and charge using default ID without NFC cards.

- Other OCPP functionality improvements
 - Authorization handling improvement while with OCPP active
 - Suspended EVSE OCPP status is being represented in the application
 - Charging mode override drop down list hidden while OCPP is active
- Installer settings control via OCPP

From now on it will be possible to configure Installer menu settings via OCPP server.

At the moment scope covers main grid and balancing parameters:

- General settings voltage and grid power;
- Dynamic load balancing enabling
- Dynamic Load Management enabling
- Solar Charging enabling
- Simplified charging
- RFID card enabling/dissabling

Improvements

- Diagnostics window optimization
 - “Current limit factor“ display moved to new location.
 - Input voltage stats expand/minimize button added.
 - Output voltage stats expand/minimize button added.
 - Output voltage on Neutral wire representation.
 - Hidden L2, L3 voltage widgets in single phase products.
 - Other minor cosmetic changes
- DLM communication improvement

From now on, product will have integrated 5 seconds delay after communication loss with the Master device. If communication was not reset, charging will be stopped.

- Solar charging feature improvement

From now on, users will be able to use external MID certified meter to calculate accurate consumption during sessions which use Solar energy as well.

- Current leakage error control in EVC161 product

In case Current leakage is/was detected, error message will remain active until users intervention.

Intervention can be achieved by:

- Rebooting station via APP/OCPP
 - Turning main fuse ON/OFF
-
- Time format representation changes

From now on, sessions in usage window will show combination of month and year in a date widget. i.e. Dec 6, 2013 – Jan 2, 2014

Fixes

APP

- *Performance optimization*
- *Language translations optimization*

FW

- *LED indications optimization*
- *Timer stabilization*
- *PEN fault protection optimization*
- *Other minor optimization*

Wiki page:

